



## **PARTS BOOK**

# **Butterfly single-head embroidery machine**


**BUTTERFLY BRAND SINGLE HEAD MACHINE PARTS BOOK**

1. BUTTERFLY SINGLE-HEAD MACHINE, RANGING FROM 9 NEEDLES TO 15 NEEDLES, STANDARD TO CUSTOMIZED EMBROIDERY AREA... IS DEVIDED INTO 20 DIAGRAMS.
2. IN EACH DIAGRAM, ALL PARTS ARE INDICATED WITH A DIGITAL WHICH IS USED TO LOCATE IT IN THE PARTS BOOK.  
(FOR EXAMPLE, DIGRAM 5-NEEDLE BAR DRIVE COMPONENTS & PART 29, IT IS 5/29. Press CTRL+F AND INPUT 5/29, THE PART IS LOCATED.)
3. FILL UP THE AFTER-SALES APPLICATION FORM WITH REQUIRED INFORMATION AND SEND IT TO BUTTERFLY. THE APPLICATION FORM COULD BE FOUND RIGHT NEXT TO THE DIAGRAM FORM.

## 1、 FRAME AND TABLE COMPONENTS

DIAGRAM/PART	NAME
1/1	MACHINE BRACKET
1/2	MACHINE BRACKET CASE(FRONT RIGHT)
1/3	MACHINE BRACKET CASE(FRONT LEFT)
1/4	MACHINE BRACKET CASE(BACK RIGHT)
1/5	MACHINE BRACKET CASE(BACK LEEFT)
1/6	MACHINE CASE FIXING WASHER
1/7	M4*8 SCREW
1/8	4*6 SCREW
1/9	STRECH FRAME SUPPORT
1/10	SCREW
1/11	TABLE WASHER
1/12	3*20 SCREW
1/13	CIRCLIP
1/14	4*12 SCREW
1/15	TABLE(UPPER)
1/16	TABLE(LOWER)
1/17	MACHINE FRAME
1/18	M10 NUT
1/19	M10 PLAIN WASHER
1/20	M10*100 SCREW
1/21	MACHINE BRACKET SUPPORT
1/22	MACHINE FEET ANTISLIP WASHER
1/23	POWER BOX TABLE
1/24	PLAIN WASHER
1/25	3*20 SCREW
1/26	M12*45 SCREW
1/27	M12 PLAIN WASHER
1/28	M12 NUT
1/29	MACHINE TRADEMARK
1/30	M5*10 SCREW
1/31	WHEEL ASM.
1/32	M8*20 SCREW
1/33	PLAIN WASHER


**BUTTERFLY BRAND SINGLE HEAD MACHINE PARTS BOOK**

1. BUTTERFLY SINGLE-HEAD MACHINE, RANGING FROM 9 NEEDLES TO 15 NEEDLES, STANDARD TO CUSTOMIZED EMBROIDERY AREA... IS DEVIDED INTO 20 DIAGRAMS.
2. IN EACH DIAGRAM, ALL PARTS ARE INDICATED WITH A DIGITAL WHICH IS USED TO LOCATE IT IN THE PARTS BOOK.  
(FOR EXAMPLE, DIGRAM 5-NEEDLE BAR DRIVE COMPONENTS & PART 29, IT IS 5/29. Press CTRL+F AND INPUT 5/29, THE PART IS LOCATED.)
3. FILL UP THE AFTER-SALES APPLICATION FORM WITH REQUIRED INFORMATION AND SEND IT TO BUTTERFLY. THE APPLICATION FORM COULD BE FOUND RIGHT NEXT TO THE DIAGRAM FORM.

**2、 ROTARY HOOK BOX**

DIAGRAM/PART	NAME
2/1	MACHINE TABLE
2/2	ROTARY HOOK FRONT CUSHION
2/3	ROTARY HOOK BACK CUSHION
2/4	MAIN MOTOR
2/5	M8*30 SCREW
2/6	M8 SPRING WASHER
2/7	M8 PLAIN WASHER
2/8	MACHINE TABLE BUSHING
2/9	LOWER SHAFT
2/10	BEARING
2/11	BEARING BUSHING
2/12	5M*16φ7.94 LOWER SHAFT PULLEY
2/13	SHAFT CONNECTION
2/14	M5*6 SCREW
2/15	M4*4 SCREW
2/16	M6*8 SCREW
2/17	M6*6 SCREW
2/18	M5*20 SCREW
2/19	ROTARY HOOK BOX COVER
2/20	SCREW
2/21	ROTARY HOOK BOX BIG COVER
2/22	4*8 SCREW
2/23	NEEDLR PLATE(LOWER)
2/24	NEEDLE PLATE(UPPER)
2/25	SCREW
2/26	KNIFE SUPPORT/NEEDLE PLATE BRACKET
2/27	ROTARY HOOK
2/28	ROTARY HOOK CASE
2/29	BOBBIN
2/30	ROTARY HOOK POSITION HOOK
2/31	9/64 SCREW
2/32	3*16 PIN
2/33	SCREW
2/34	ROTARY HOOK BOX GUARD
2/35	4*6 SCREW

**3、 THREAD CUT PARTS**

DIAGRAM/PART	NAME
3/1	THREAD CUT MOTOR
3/2	THREAD CUT MOTOR BRACKET
3/3	THREAD CUT SENSOR
3/4	M3*8 SCREW
3/5	4*8 SCREW
3/6	RUBBER WASHER
3/7	M4*8 SCREW
3/8	DRIVE ROD
3/9	THREAD CUT SENSOR HEAD
3/10	M4*10 SCREW
3/11	THREAD CUT PITMAN ROD
3/12	PIN
3/13	THREAD CUT DRIVE CONNECTION LEVER
3/14	COPPER BUSHING
3/15	THREAD CUT LEVER
3/16	FLAT EMBROIDERY PITMAN ROD
3/17	DRIVE ROD
3/18	FLEXIBLE KNIFE
3/19	M3*4 SCREW
3/20	SPRING WASHER
3/21	FIXED KNIFE
3/22	M3*3 SCREW
3/23	3*5 SCREW
3/24	POSITION CUSHION
3/25	THREAD PICK PITMAN ROD
3/26	THREAD PICK ELECTROMAGNET ASM.
3/27	THREAD PICK ELECTROMAGNET INSTAL BOARD
3/28	THREAD PICK RESET PLATE
3/29	3.3*3.0 SCREW
3/30	φ3 OPEN CIRCLIP
3/31	2.5*4 SCREW
3/32	PICK FEED BRACKET
3/33	THREAD PICK FORK
3/34	PIN
3/35	PLAIN WASHER
3/36	THREAD PICK FORK BRACKET
3/37	THREAD PICK THRUST BLOCK
3/38	M5*10 SCREW
3/39	M4 PIN
3/40	M4 NUT
3/41	THREAD PICK PIN


**BUTTERFLY BRAND SINGLE HEAD MACHINE PARTS BOOK**

1. BUTTERFLY SINGLE-HEAD MACHINE, RANGING FROM 9 NEEDLES TO 15 NEEDLES, STANDARD TO CUSTOMIZED EMBROIDERY AREA... IS DEVIDED INTO 20 DIAGRAMS.
2. IN EACH DIAGRAM, ALL PARTS ARE INDICATED WITH A DIGITAL WHICH IS USED TO LOCATE IT IN THE PARTS BOOK.  
(FOR EXAMPLE, DIGRAM 5-NEEDLE BAR DRIVE COMPONENTS & PART 29, IT IS 5/29. Press CTRL+F AND INPUT 5/29, THE PART IS LOCATED.)
3. FILL UP THE AFTER-SALES APPLICATION FORM WITH REQUIRED INFORMATION AND SEND IT TO BUTTERFLY. THE APPLICATION FORM COULD BE FOUND RIGHT NEXT TO THE DIAGRAM FORM.

**4、 MACHINE HEAD**

DIAGRAM/PART	NAME		
4/1	MACHINE HEAD	4/31	ADJUSTING HANDLE
4/2	UPPER SHAFT BACK BEARING BUSHING	4/32	M4*4 SCREW
4/3	BEARING	4/33	φ7.94 SHAFT
4/4	M5*6 SCREW	4/34	SPRING
4/5	BEARING	4/35	ADJUSTING HANDLDE INSTAL BRACKET
4/6	SENSOR SUPPORT	4/36	M4*8 SCREW
4/7	4*6 SCREW	4/37	GEAR
4/8	UPPER SHAFT SENSOR	4/38	SM15/64*28 L=6 SCREW
4/9	M4*6 SCREW	4/39	THREAD TAKE-UP DRIVE CAM
4/10	M6*8 SCREW	4/40	SM15/64*28 L=4 SCREW
4/11	M6*6 SCREW	4/41	CRANKSHAFT
4/12	MACHINE HEAD SHADE WASHER	4/42	DOMESTIC CONECTION ROD
4/13	WINDING PLATE	4/43	NEEDLE BEARING
4/14	M4*8 SCREW	4/44	SCREW
4/15	M4 SPRING WASHER	4/45	M4*10 SCREW
4/16	M4 PLAIN WASHER	4/46	LOWER GUIDE RAIL POSITION HOOK
4/17	HTD5M-15-525 BLET	4/47	GUIDE ROD THRUST PLATE
4/18	UPPER SHAFT PULLEY	4/48	DUSTPROOF PLATE(LEFT)
4/19	M5*6 SCREW	4/49	DUSTPROOF PLATE(RIGHT)
4/20	6004φ15 BEARING BUSHING	4/50	NA4902 NEEDLE BEARING
4/21	6004 BEARING	4/51	GUIDE RAIL SLIDE BLOCK POSITION BRACKET
4/22	φ15 UPPER SHAFT	4/52	SIGHT GLASS
4/23	DIAL	4/53	DIAL FINGER
4/24	MACHINE HEAD GUIDE RAIL(9 NEEDLES)	4/54	M4*6 SCREW
4/24	MACHINE HEAD GUIDE RAIL(12 NEEDLES)	4/55	THRUST PLATE
4/25	M4*10 SCREW	4/56	THRUST PLATE SUPPORT
4/26	PRESSER FOOT CAM GUARD	4/57	MACHINE HEAD FRONT COVER
4/27	PRESSER FOOT DRIVE CAM	4/58	MACHINE HEAD BACK COVER
4/28	M8*8 SCREW	4/59	THREAD TENSION ASM.
4/29	M10*40 SCREW	4/60	M4*8 SCREW
4/30	M10 SPRING WASHER	4/61	SPOTLIGHT BRACKET
		4/62	SPOTLIGHT


**BUTTERFLY BRAND SINGLE HEAD MACHINE PARTS BOOK**

1. BUTTERFLY SINGLE-HEAD MACHINE, RANGING FROM 9 NEEDLES TO 15 NEEDLES, STANDARD TO CUSTOMIZED EMBROIDERY AREA... IS DEVIDED INTO 20 DIAGRAMS.
2. IN EACH DIAGRAM, ALL PARTS ARE INDICATED WITH A DIGITAL WHICH IS USED TO LOCATE IT IN THE PARTS BOOK.  
(FOR EXAMPLE, DIGRAM 5-NEEDLE BAR DRIVE COMPONENTS & PART 29, IT IS 5/29. Press CTRL+F AND INPUT 5/29, THE PART IS LOCATED.)
3. FILL UP THE AFTER-SALES APPLICATION FORM WITH REQUIRED INFORMATION AND SEND IT TO BUTTERFLY. THE APPLICATION FORM COULD BE FOUND RIGHT NEXT TO THE DIAGRAM FORM.

5、 NEEDLE BAR DRIVE PARTS		6、 UPPER THREAD HOLDER SETS	
DIAGRAM/PART	NAME	DIAGRAM/PART	NAME
5/1	THREAD TAKE-UP DRIVE ROD B	6/1	UPPER THREAD MOTOR
5/2	M4*10 SCREW	6/2	UPPER THREAD MOTOR BASE
5/3	M8 PLAIN WASHER	6/3	M4*8 SCREW
5/4	THREAD TAKE-UP ROD BEARING BRACKET	6/4	M4*6 SCREW
5/5	M5 PLAIN WASHER	6/5	M4 SPRING WASHER
5/6	M5 SPRING WASHER	6/6	M4 PLAIN WASHER
5/7	M5*12 SCREW	6/7	UPPER THREAD SPRING
5/8	THREAD TAKE-UP DRIVE ROD	6/8	3*6 SCREW
5/9	CAM DRIVE ROD	6/9	M3*18 SCREW
5/10	COPPER BUSHING	6/10	NUT
5/11	DRIVE ROD	6/11	CONNECTION ROD
5/12	PIN B	6/12	PIN
5/13	PIN A	6/13	HOOK FIXING BLOCK
5/14	SMALL CONECTION ROD	6/14	M4*10 SCREW
5/15	M5 NUT	6/15	UPPER HOOK DRIVE ROD
5/16	A DRIVE BEARING BUSHING	6/16	M3*10 SCREW
5/17	φ10 OUTER CIRCLIP	6/17	ERASURE BLOCK
5/18	DRIVE SHAFT UP-DOWM FLEXIBLE SUPPORT	6/18	M5*12 SCREW
5/19	3*4 SCREW	6/19	M5 SPRING WASHER
5/20	PRESSER FOOT SLIDE BLOCK ASM.	6/20	M5 PLAIN WASHER
5/21	RUBBER SUPPORT(LARGE)	6/21	HOOK GUIDE BRACKET
5/22	DRIVE BEARING BUSHING	6/22	M3 NUT
5/23	WOOL TOP	6/23	UPPER HOOK SUPPORT
5/24	φ7.24 MAIN SHAFT	6/24	HOOK
5/25	SPRING	6/25	3*4 SCREW
5/26	689Z BEARING	6/26	M5*16 SCREW
5/27	WOOL TOP	6/27	SUPPORT BUSHING
5/28	M5*6 SCREW	6/28	HOOK GUIDE PLATE
5/29	NEEDLE BAR DRIVE BLOCK ASM.	6/29	M4*8 SCREW
		6/30	M4*12 SCREW
		6/31	JUMPING MOTOR INSTALL BRACKET
		6/32	RUBBER WASHER
		6/33	M3 PLAIN WASHER
		6/34	M3*12 SCREW
		6/35	JUMPING CONNECTION ROD SUPPORT
		6/36	JUMPING CONNECTION ROD
		6/37	4*6 SCREW


**BUTTERFLY BRAND SINGLE HEAD MACHINE PARTS BOOK**

1. BUTTERFLY SINGLE-HEAD MACHINE, RANGING FROM 9 NEEDLES TO 15 NEEDLES, STANDARD TO CUSTOMIZED EMBROIDERY AREA... IS DEVIDED INTO 20 DIAGRAMS.
2. IN EACH DIAGRAM, ALL PARTS ARE INDICATED WITH A DIGITAL WHICH IS USED TO LOCATE IT IN THE PARTS BOOK.  
(FOR EXAMPLE, DIGRAM 5-NEEDLE BAR DRIVE COMPONENTS & PART 29, IT IS 5/29. Press CTRL+F AND INPUT 5/29, THE PART IS LOCATED.)
3. FILL UP THE AFTER-SALES APPLICATION FORM WITH REQUIRED INFORMATION AND SEND IT TO BUTTERFLY. THE APPLICATION FORM COULD BE FOUND RIGHT NEXT TO THE DIAGRAM FORM.

<b>7、 COLOR CHANGE PARTS</b>		<b>8、 NEEDLE BAR BRACKET(1)</b>	
<b>DIAGRAM/PART</b>	<b>NAME</b>	<b>DIAGRAM/PART</b>	<b>NAME</b>
7/1	COLOR CHANGE MOTOR	8/1	NEEDLE BAR ASM.
7/2	ADJUSTING HANDLE(SMALL)	8/2	M4*16 SCREW
7/3	M4*6 SCREW	8/3	DB*K5 75/11 NEEDLE
7/4	M4*8 SCREW		
7/5	M4 SPRING WASHER		
7/6	M4 PLAIN WASHER	<b>9、 NEEDLE BAR BRACKET(2)</b>	
7/7	MOTOR SUPPORT	<b>DIAGRAM/PART</b>	<b>NAME</b>
7/8	COLOR CHANGE MOTOR BRACKET		
7/9	M5 PLAIN WASHER	9/1	9 NEEDLES LOWER THREAD GUIDE
7/10	M5 SPRING WASHER	9/1	12 NEEDLES LOWER THREAD GUIDE
7/11	M5*12 SCREW	9/2	9/64 SCREW
7/12	M4*8 SCREW	9/3	LOWER PLATE(9 NEEDLES)
7/13	696LU(NSK) BEARING	9/3	LOWER PLATE(12 NEEDLES)
7/14	696LUBEARING	9/4	MEDIAL THREAD GUIDE ASM.(9 NEEDLES)
7/15	M3*8 SCREW	9/4	MEDIAL THREAD GUIDE ASM.(12 NEEDLES)
7/16	COLOR CHANGE CAM	9/5	THREAD TENSION ASM.
7/17	M3*5 SCREW	9/6	9/64 SCREW
7/18	COLOR CHANGE SUPPORT	9/7	UPPER PLATE(9 NEEDLES)
7/19	M4 NUT	9/7	UPPER PLATE(12 NEEDLES)
7/20	POTENTIOMETER SUPPORT	9/8	ON-OFF ANNUNCIATOR SUPPORT
7/21	M4*16 SCREW	9/9	4*6 SCREW
7/22	PHOTO COUPLER SUPPORT	9/10	CUSHION
7/23	COLOR CHANGE COPPER BUSHING	9/11	COLOR CHANGE ROLLAR ASM.(9 NEEDLES)
7/24	COLOR CHANGE BOX CASE	9/11	COLOR CHANGE ROLLAR ASM.(12 NEEDLES)
7/25	4*6 SCREW	9/12	M4*12 SCREW
7/26	POTENTIOMETER	9/13	M4*18 SCREW
		9/14	M4 NUT
		9/15	GUARD SUPPORT
		9/16	M4*8 SCREW
		9/17	M4 SPRING WASHER
		9/18	M4 PLAIN WASHER
		9/19	DUSTPROOF CASE
		9/20	MAGNET
		9/21	M3*14 SCREW
		9/22	M3 NUT


**BUTTERFLY BRAND SINGLE HEAD MACHINE PARTS BOOK**

1. BUTTERFLY SINGLE-HEAD MACHINE, RANGING FROM 9 NEEDLES TO 15 NEEDLES, STANDARD TO CUSTOMIZED EMBROIDERY AREA... IS DEVIDED INTO 20 DIAGRAMS.
2. IN EACH DIAGRAM, ALL PARTS ARE INDICATED WITH A DIGITAL WHICH IS USED TO LOCATE IT IN THE PARTS BOOK.  
(FOR EXAMPLE, DIGRAM 5-NEEDLE BAR DRIVE COMPONENTS & PART 29, IT IS 5/29. Press CTRL+F AND INPUT 5/29, THE PART IS LOCATED.)
3. FILL UP THE AFTER-SALES APPLICATION FORM WITH REQUIRED INFORMATION AND SEND IT TO BUTTERFLY. THE APPLICATION FORM COULD BE FOUND RIGHT NEXT TO THE DIAGRAM FORM.

10、 X-AXIS DRIVE PARTS		11、 Y-AXIS DRIVE PARTS	
DIAGRAM/PART	NAME	DIAGRAM/PART	NAME
10/1	X-AXIS GUIDE RAIL BRACKET	11/1	3m*33φ12 MAIN SHAFT DRIVE WHEEL
10/2	WOOL TOP	11/2	M4*6 SCREW
10/3	COVER SUPPORT	11/3	Y-AXIS MOTOR BRACKET
10/4	X-AXIS DRIVE COVER	11/4	M6*16 SCREW
10/5	X-AXIS DRIVE COVER	11/5	86 MOTOR
10/6	4*6 SCREW	11/6	M5 SPRING MOTOR
10/7	GUIDE RAIL BRACKET RIGHT SUPPORT	11/7	M5*20 SCREW
10/8	GUIDE RAIL BRACKET LEFT SUPPORT	11/8	φ12 CONNECTION BUSHION
10/9	M5*12 SCREW	11/9	M5*6 SCREW
10/10	M5 SPRING WASHER	11/10	φ12 Y SHAFT
10/11	M5 PLAIN WASHER	11/11	BEARING BRACKET
10/12	HK0808 NEEDLE BEARING	11/12	M5*16 SCREW
10/13	3M*20φ10 PASSIVE PULLEY	11/13	NA4302 NEEDLE BEARING
10/14	φ6 OPEN CIRCLIP	11/14	BEARING BUSHIONG
10/15	X-AXIS PASSIVE PULLEY BRACKET	11/15	BELT
10/16	X-AXIS PASSIVE PULLEY BRACKET ADJUSTING FIXING BRACKET	11/16	Y-AXIS LIMIT SENSOR
10/17	M4 PLAIN WASHER	11/17	M4 PLAIN WASHER
10/18	M4*16 SCREW	11/18	M4 SPRING WASHER
10/19	M4 SPRING WASHER	11/19	M4*8 SCREW
10/20	M4*10 SCREW	11/20	M3*12 SCREW
10/21	M4*8 SCREW	11/21	M3 SPRING WASHER
10/22	PIN	11/22	M3 PLAIN WASHER
10/23	3M*20φ8 PASSIVE PULLEY	11/23	BLET PLATE
10/24	M5*6 SCREW	11/24	M4*12 SCREW
10/25	X-AXIS DRIVE MOTOR	11/25	GUIDE RAIL SLIDE BLOCK POSITION BRACKET
10/26	X-AXIS MOTOR COVER	11/26	420 STRAIGHT GUIDE RAIL
10/27	X-AXIS PHOTO COUPLER BRACKET INSTALL SUPPORT	11/27	M5*12 SCREW
10/28	X-AXIS STOPPER	11/28	M5 PLAIN WASHER
10/29	M3*6 SCREW	11/29	3m*33 PASSIVE PULLEY
10/30	750 X-AXIS GUIDE RAIL	11/30	HK0808 NEEDLE BEARING
10/31	M3*10 SCREW	11/31	φ6 OPEN CIRCLIP
10/32	DOMESTIC X-AXIS EMBROIDERY FRAME LEFT SUPPORT	11/32	PIN
10/33	DOMESTIC X-AXIS EMBROIDERY FRAME RIGHT SUPPORT	11/33	TENSION WHEEL BRACKET
10/34	DRIVE POSITION BLOCK(LEFT)	11/34	M5 NUT
10/35	DRIVE POSITION BLOCK(RIGHT)	11/35	4*6 SCREW
10/36	SPRING PLATE	11/36	Y-AXIS STOPPER
10/37	M3 PLAIN WASHER		
10/38	M3*8 SCREW		
10/39	CONNECTION PLATE		
10/40	M3 SPRING WASHER		
10/41	M3*12 SCREW		
10/42	X-AXIS DRIVE BLET PLATE(LOWER)		
10/43	M4*12 SCREW		
10/44	X-AXIS LIMIT SENSOR		
10/45	BLET		
10/46	X-AXIS DRIVE BLET PLATE(UPPER)		
10/47	RULER		

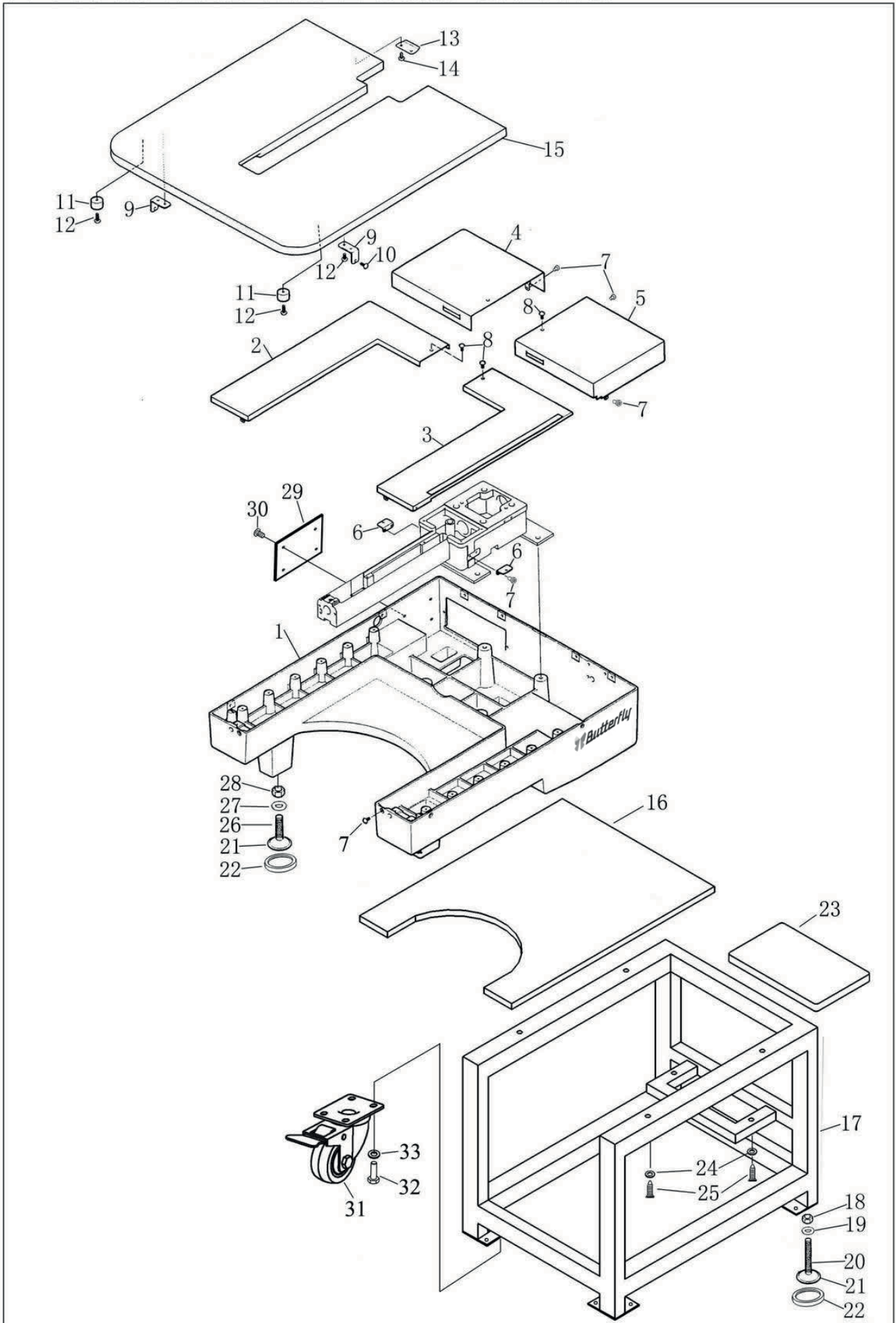

**BUTTERFLY BRAND SINGLE HEAD MACHINE PARTS BOOK**

1. BUTTERFLY SINGLE-HEAD MACHINE, RANGING FROM 9 NEEDLES TO 15 NEEDLES, STANDARD TO CUSTOMIZED EMBROIDERY AREA... IS DEVIDED INTO 20 DIAGRAMS.
2. IN EACH DIAGRAM, ALL PARTS ARE INDICATED WITH A DIGITAL WHICH IS USED TO LOCATE IT IN THE PARTS BOOK.  
(FOR EXAMPLE, DIGRAM 5-NEEDLE BAR DRIVE COMPONENTS & PART 29, IT IS 5/29. Press CTRL+F AND INPUT 5/29, THE PART IS LOCATED.)
3. FILL UP THE AFTER-SALES APPLICATION FORM WITH REQUIRED INFORMATION AND SEND IT TO BUTTERFLY. THE APPLICATION FORM COULD BE FOUND RIGHT NEXT TO THE DIAGRAM FORM.

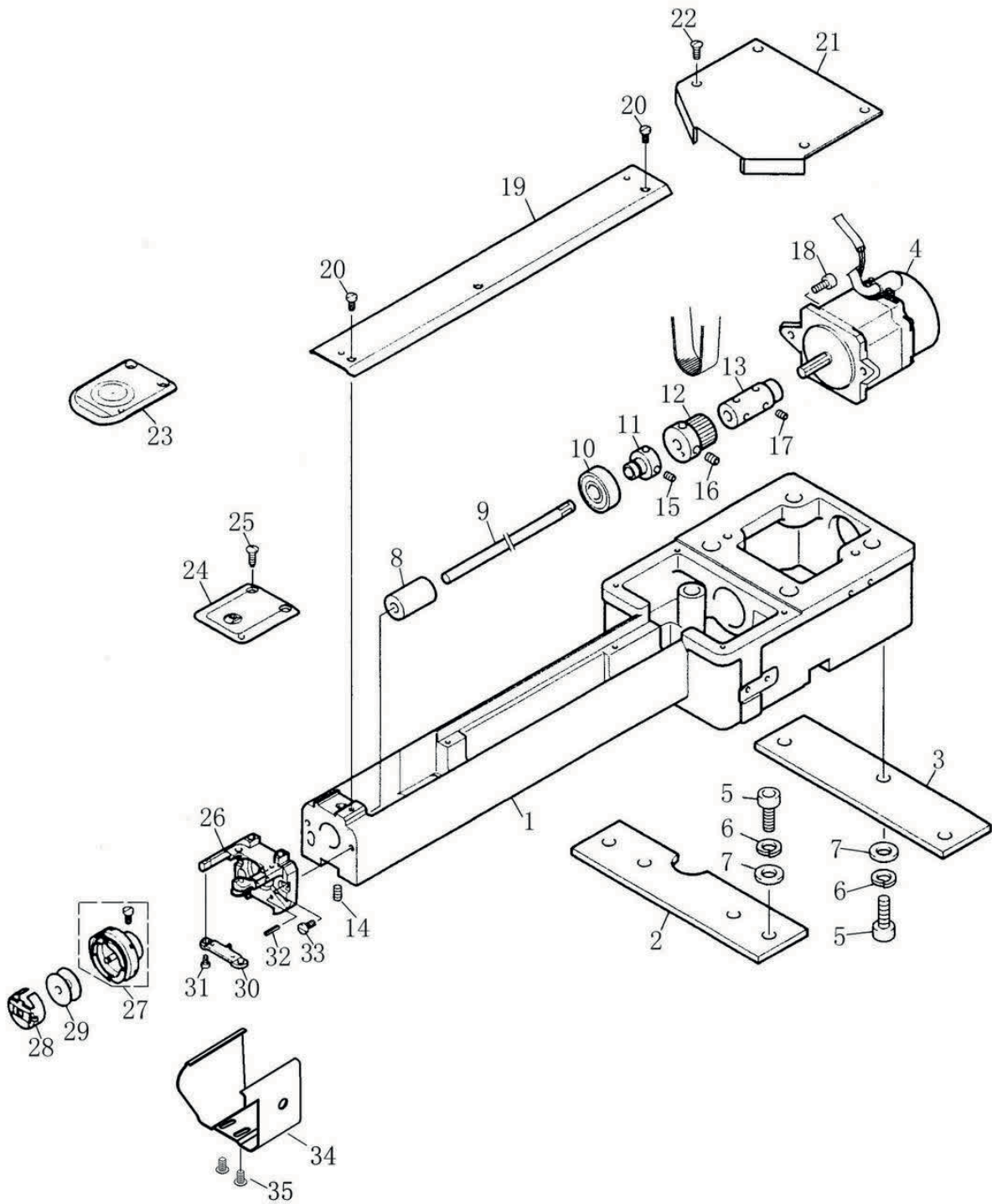
<b>12、 THREAD TENSION PARTS</b>		<b>16、 CAP DRIVE PARTS</b>	
DIAGRAM/PART	NAME	DIAGRAM/PART	NAME
12/1	THREAD GUIDE ASM.(12 NEEDLES)	16/1	CAP DRIVE ASM.
12/2	M4*16 SCREW	16/2	M4*12 SCREW
12/3	4*12 SCREW	16/3	M4 PLAIN WASHER
12/4	INDICATOR	16/4	M5*12 SCREW
12/5	SENSOR BASEPLATE	16/5	M5 PLAIN WASHER
<b>13、 AUTOMATIC WINDING PARTS</b>		<b>17、 CAP BASE PARTS</b>	
DIAGRAM/PART	NAME	DIAGRAM/PART	NAME
13/1	WINDING ASM.	17/1	CAP BASE ASM.
13/2	RUBBER WASHER	<b>18、 CAP FRAME PARTS</b>	
13/3	BOBBIN	DIAGRAM/PART	NAME
13/4	M4*8 SCREW	18/1	CAP FRAME ASM.
<b>14、 ELECTRICAL CONTROL PARTS</b>		<b>19、 THREAD SUPPORT</b>	
DIAGRAM/PART	NAME	DIAGRAM/PART	NAME
14/1	MACHINE HEAD BACK CASE	19/1	THREAD STAND BASEPLATE
14/2	M4*6 SCREW	19/2	THREAD STAND COLUMN
14/3	M5*10 SCREW	19/3	NAIL
14/4	POWER BASEPLATE ASM.	19/4	M5 PLAIN WASHER
14/5	4*8 SCREW	19/5	M5 SPRING WASHER
14/6	COMPUTER BASEPLATE ASM. A	19/6	M5 NUT
14/7	COMPUTER BASEPLATE ASM. A	19/7	M4*10 SCREW
14/8	M4*10 SCREW	19/8	M5*10 SCREW
14/9	POWER BOX ASM.	19/9	M12 PLAIN WASHER
14/10	4*25 SCREW	19/10	THREAD TENSION ASM.
<b>15、 OPERATE PLATE</b>		19/11	M4 PLAIN WASHER
DIAGRAM/PART	NAME	19/12	BUSHING
15/1	COMPUTER MONITOR SUPPORT BOARD	19/13	M6*12 SCREW
15/2	COMPUTER MONITOR CONNECTION BOARD B	19/14	THREAD STAND SUPPORT A
15/3	M4*10 SCREW	19/15	THREAD STAND SUPPORT B
15/4	M5*10 SCREW	19/16	THREAD STAND SUPPORT C
15/5	COMPUTER	19/17	THREAD STAND SUPPORT D
		19/18	THREAD STAND SUPPORT E
		19/19	THREAD STAND SUPPORT F
		19/20	PLASTIC TUBE BUSHING
		19/21	COPPER TUBE BUSHING
		19/22	TUBE
		<b>20、 EMBROIDERY FRAME</b>	
		DIAGRAM/PART	NAME
		20/1	X-AXIS FRAME
		20/2	Y-AXIS FRAME
		20/3	WOOL TOP(SHORT)
		20/4	WOOL TOP(LONG)
		20/5	FRAME ANGLE IRON
		20/6	M6*12 SCREW



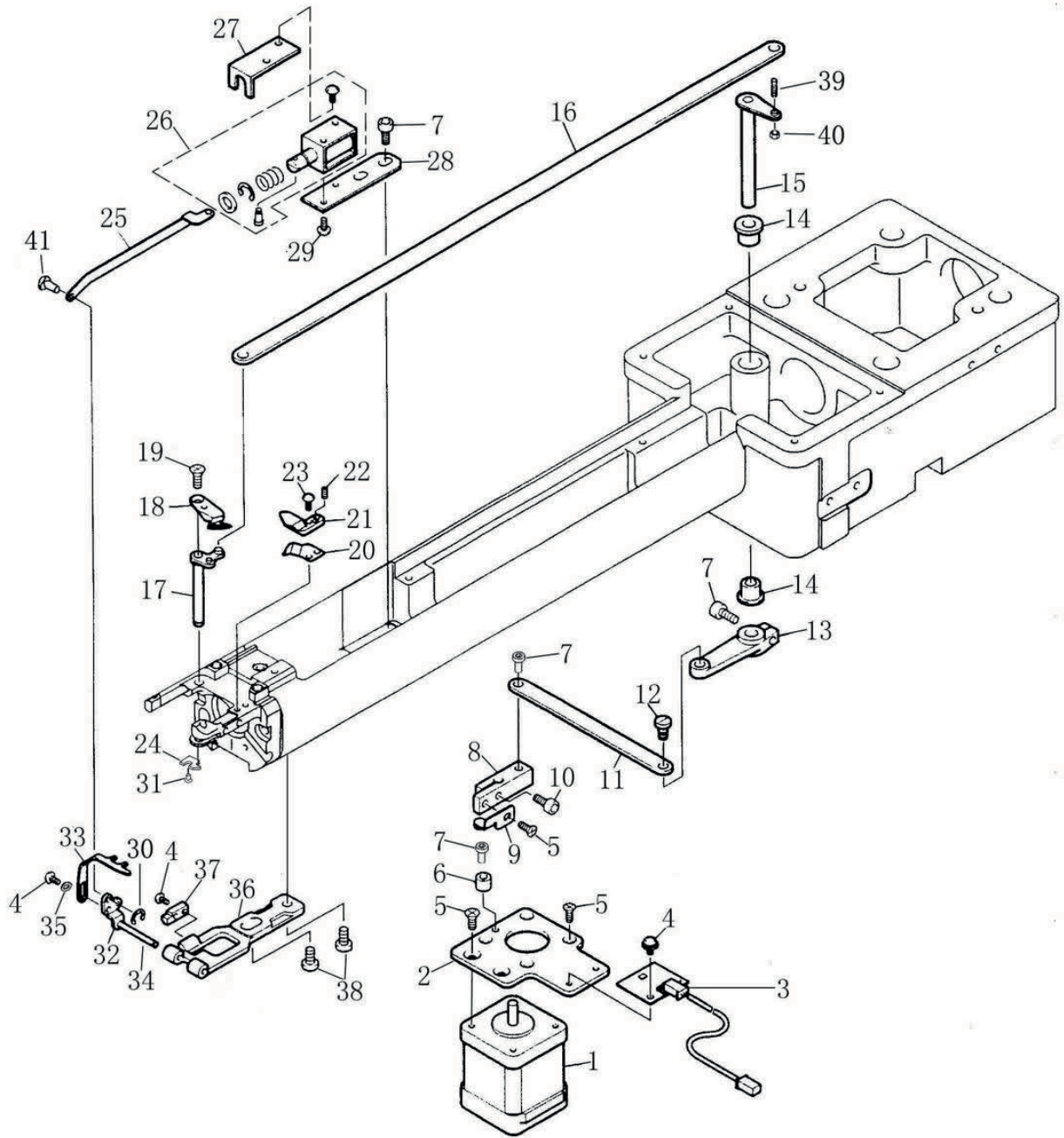
# 1、FRAME AND TABLE COMPONENTS



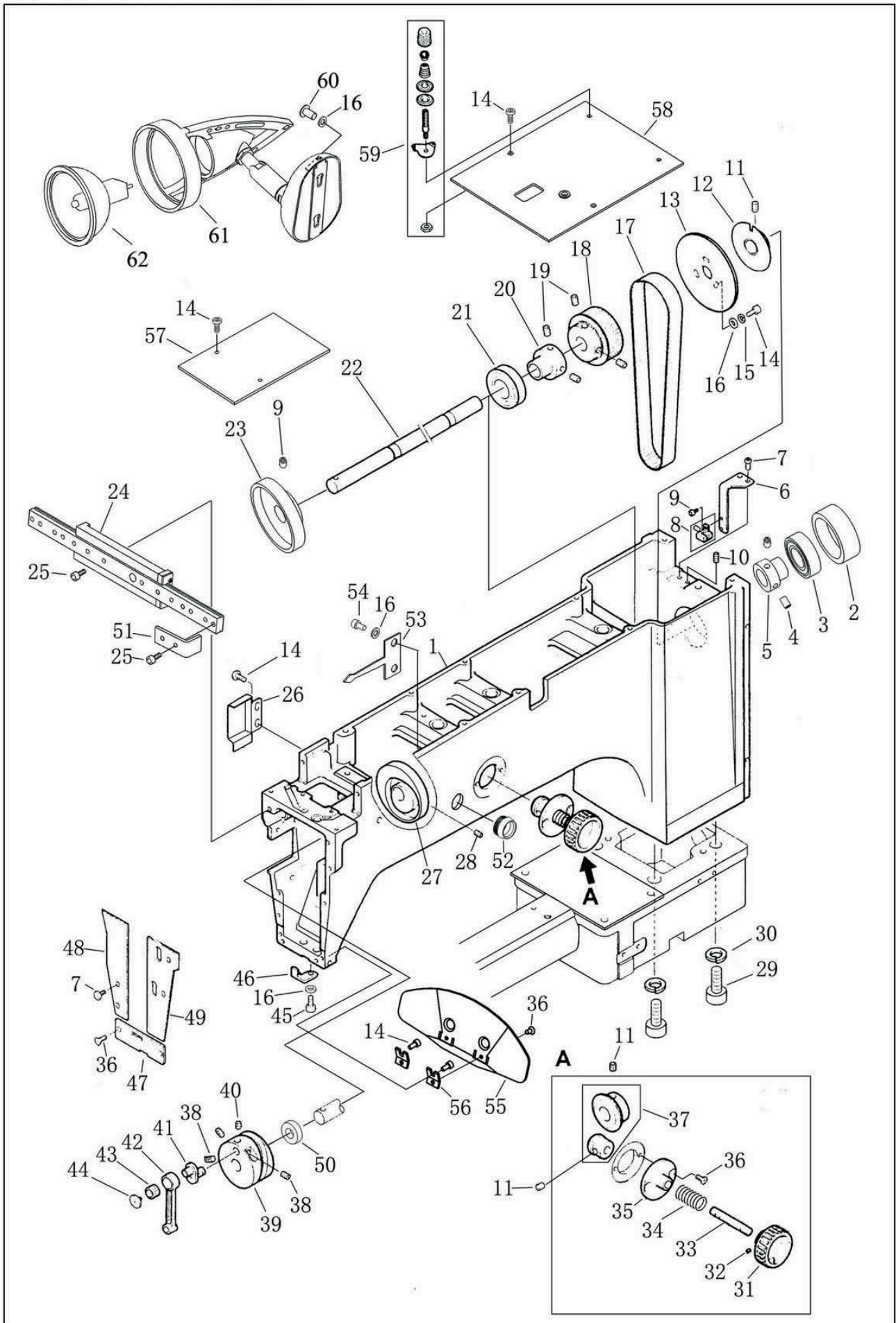
## 2、 ROTARY HOOK BOX



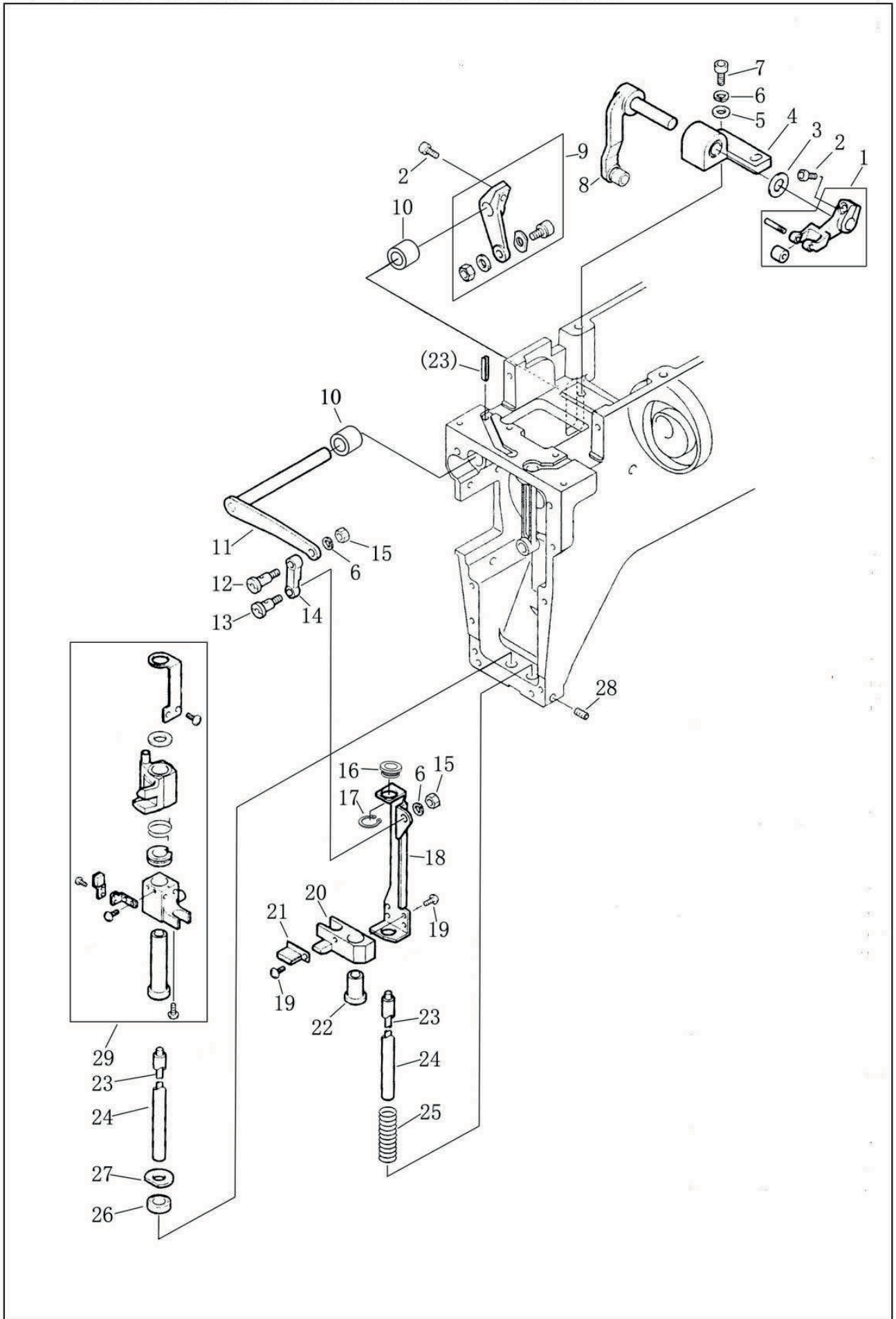
### 3. THREAD CUT COMPONENTS



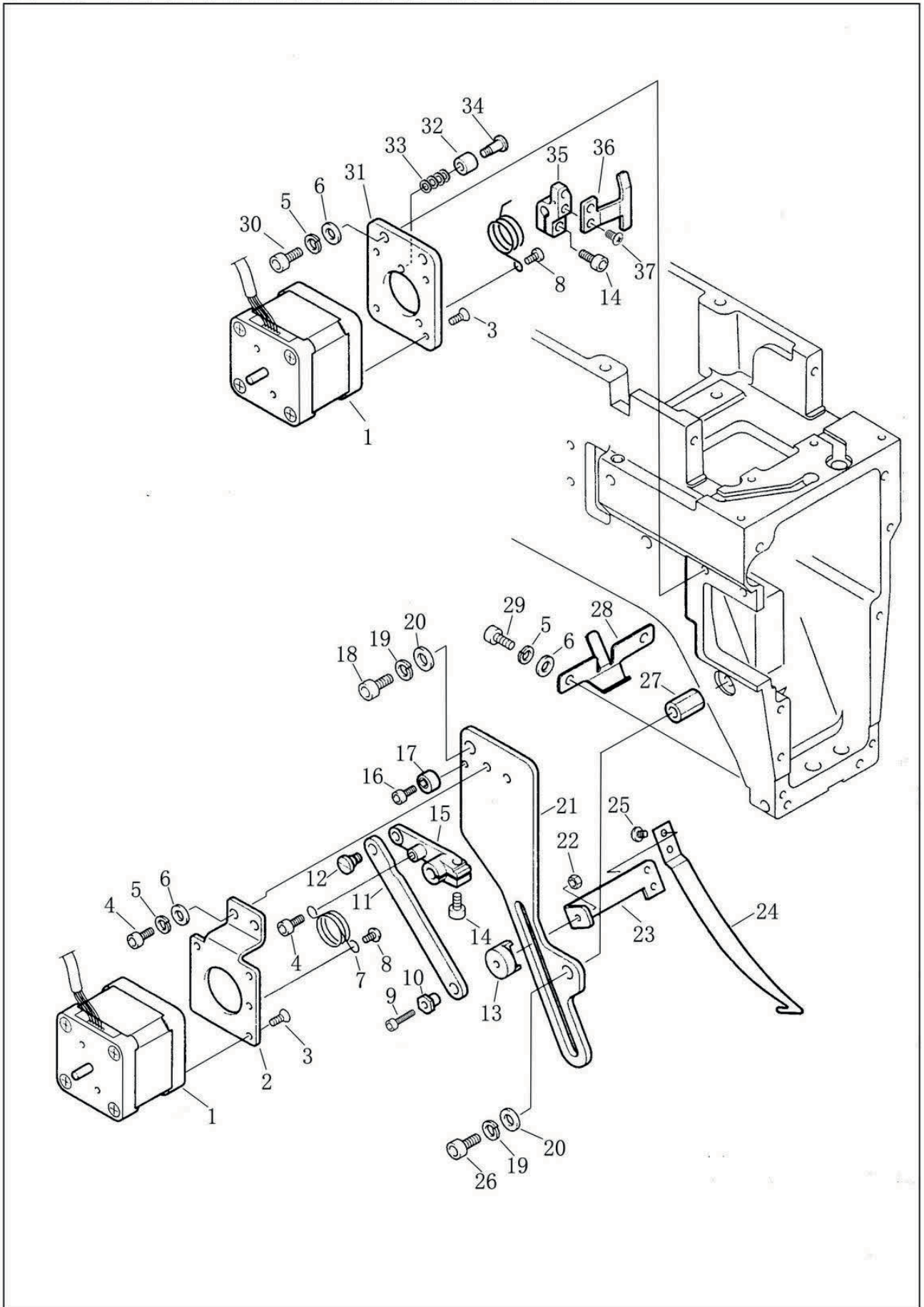
# 4、 MACHINE HEAD



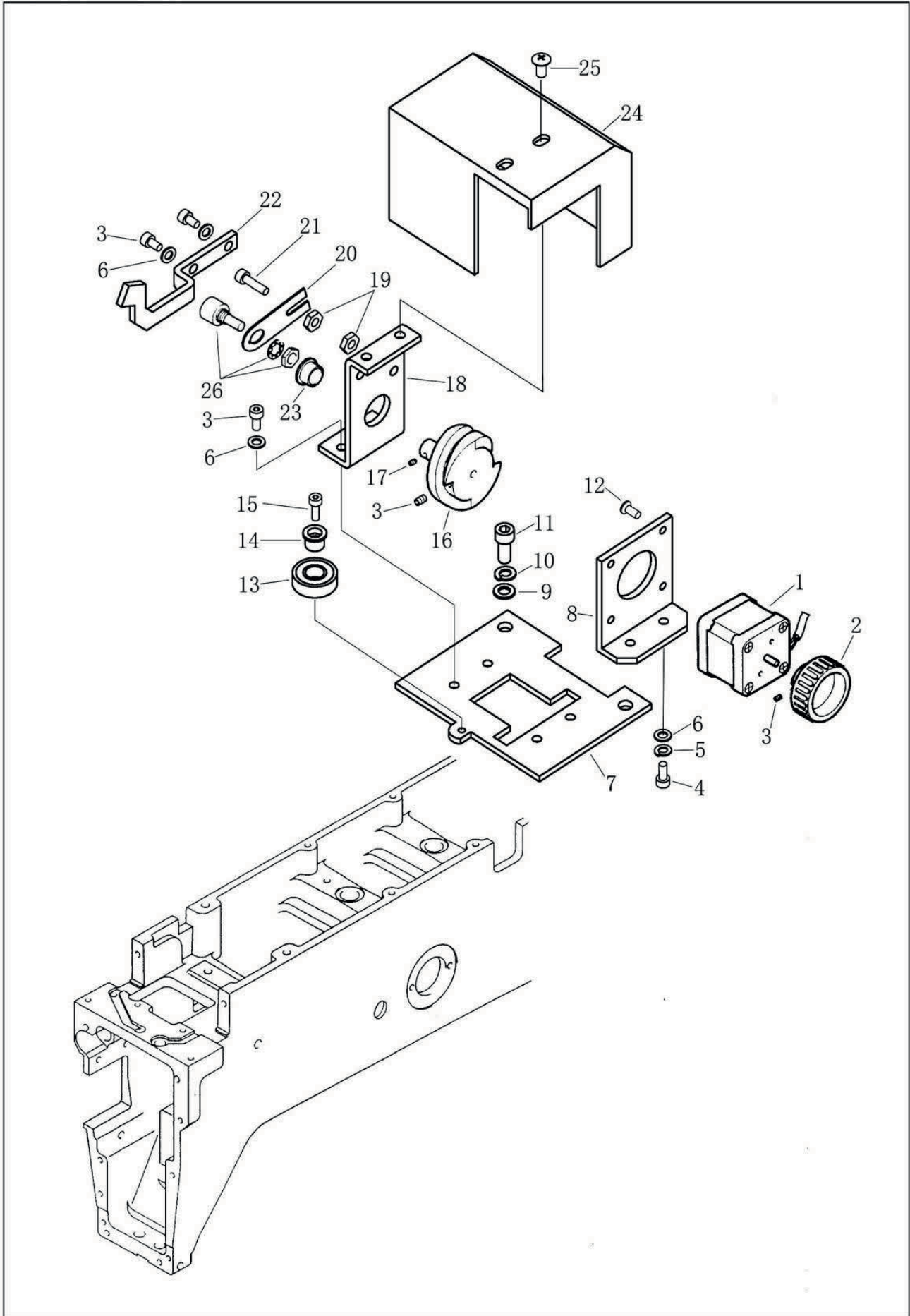
# 5、 NEEDLE BAR DRIVE COMPONENTS



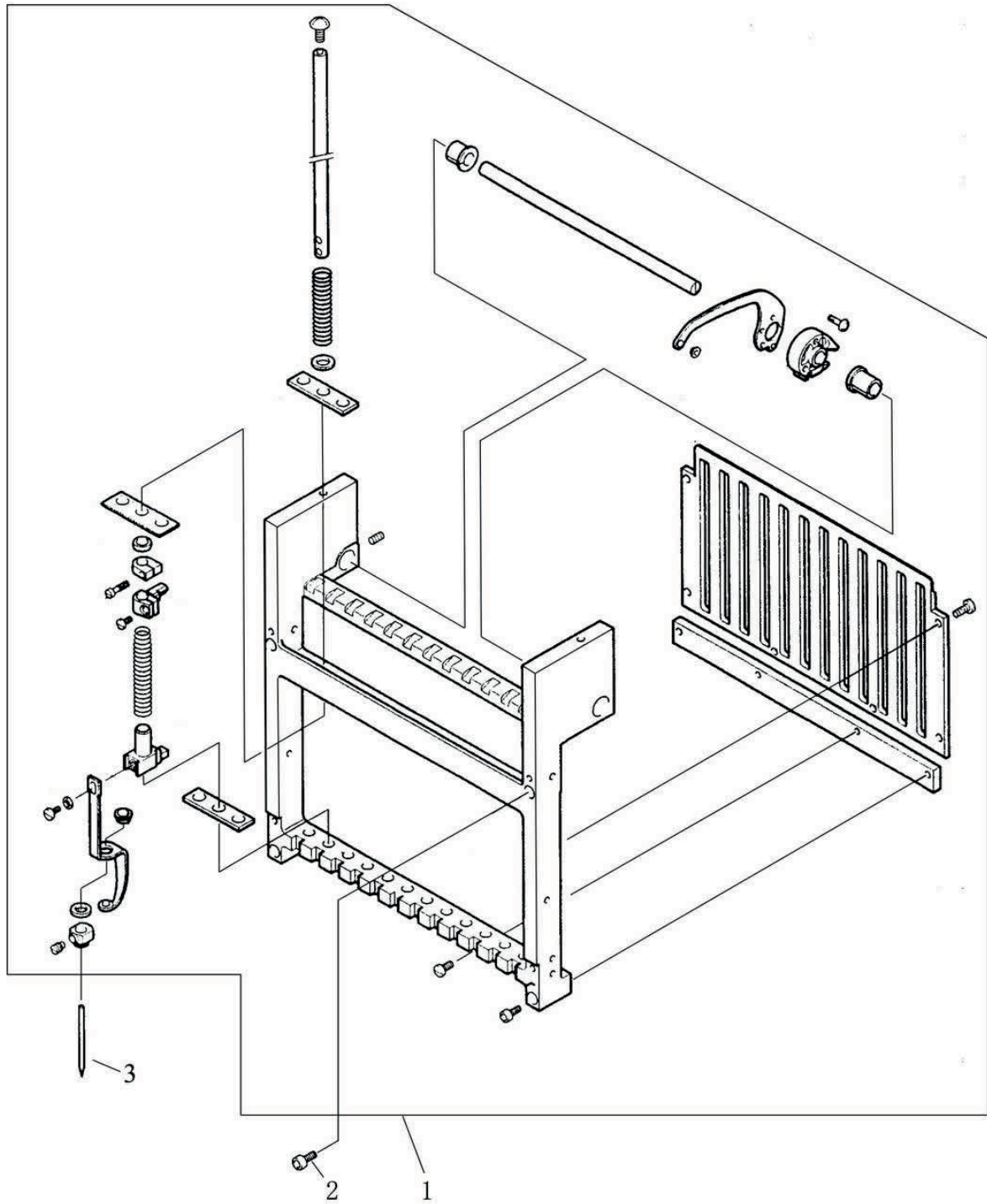
# 6. UPPER THREAD HOLDER SETS



# 7、COLOR CHANGE COMPONENTS

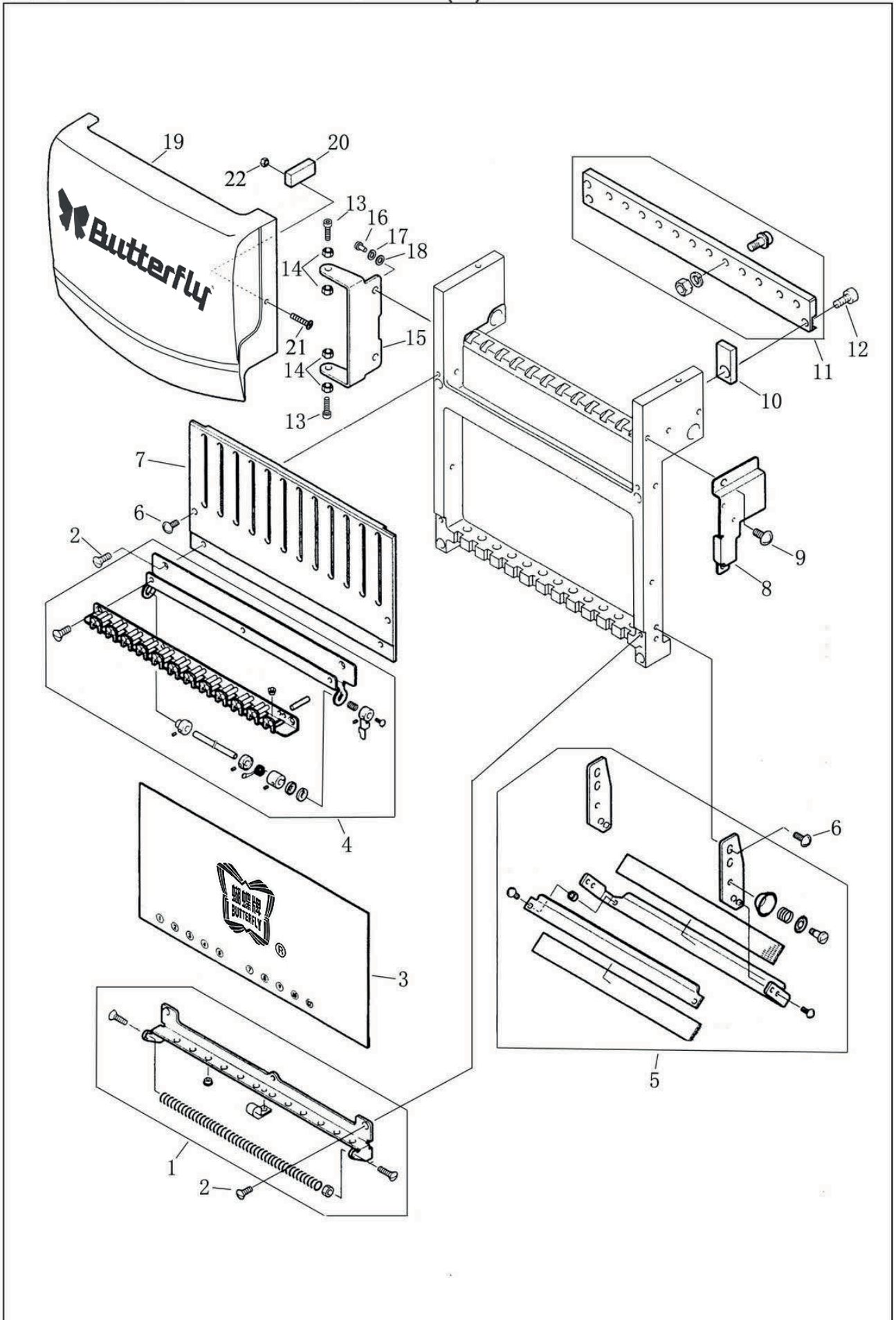


## 8、 NEEDLE BAR BRACKET (1)

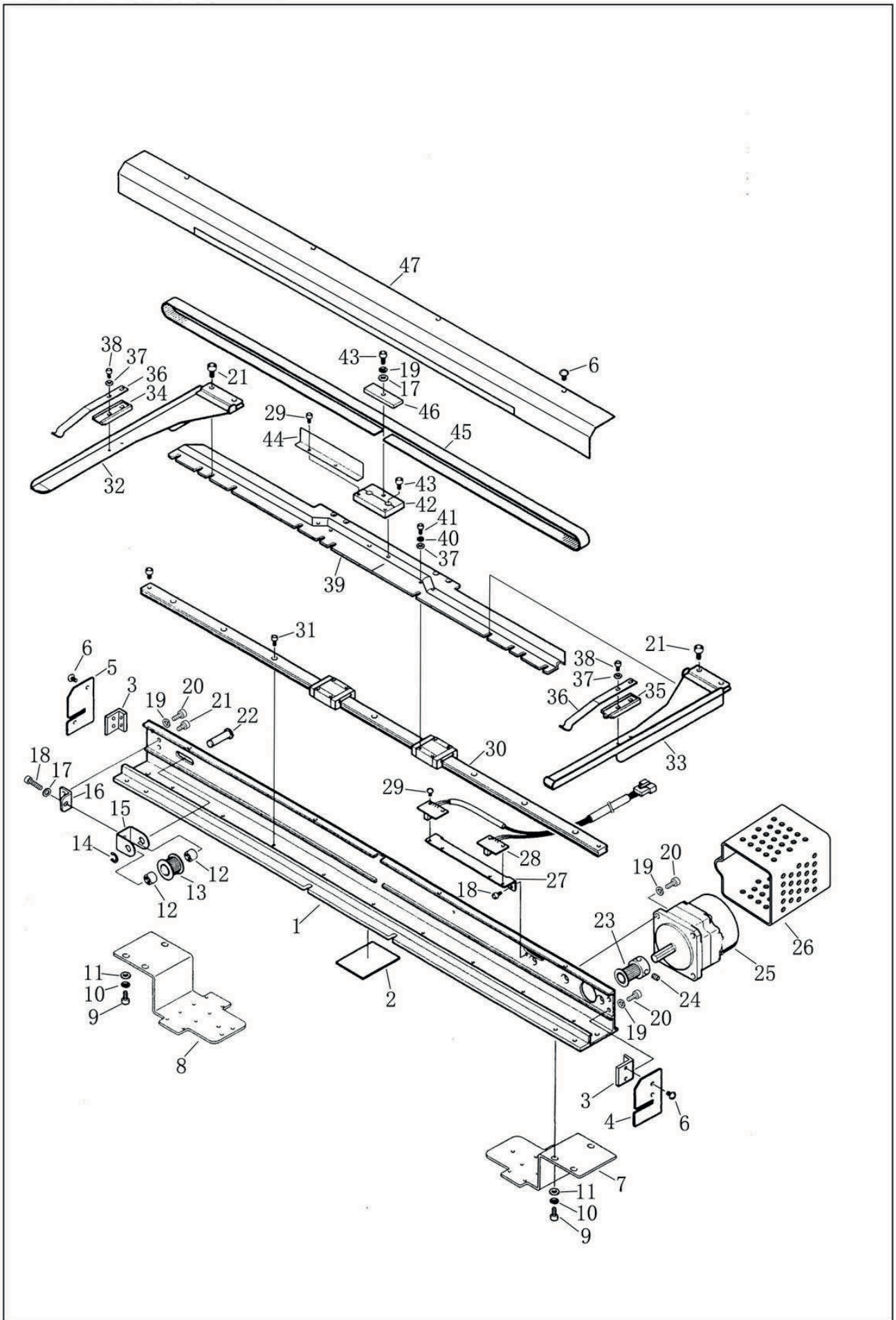




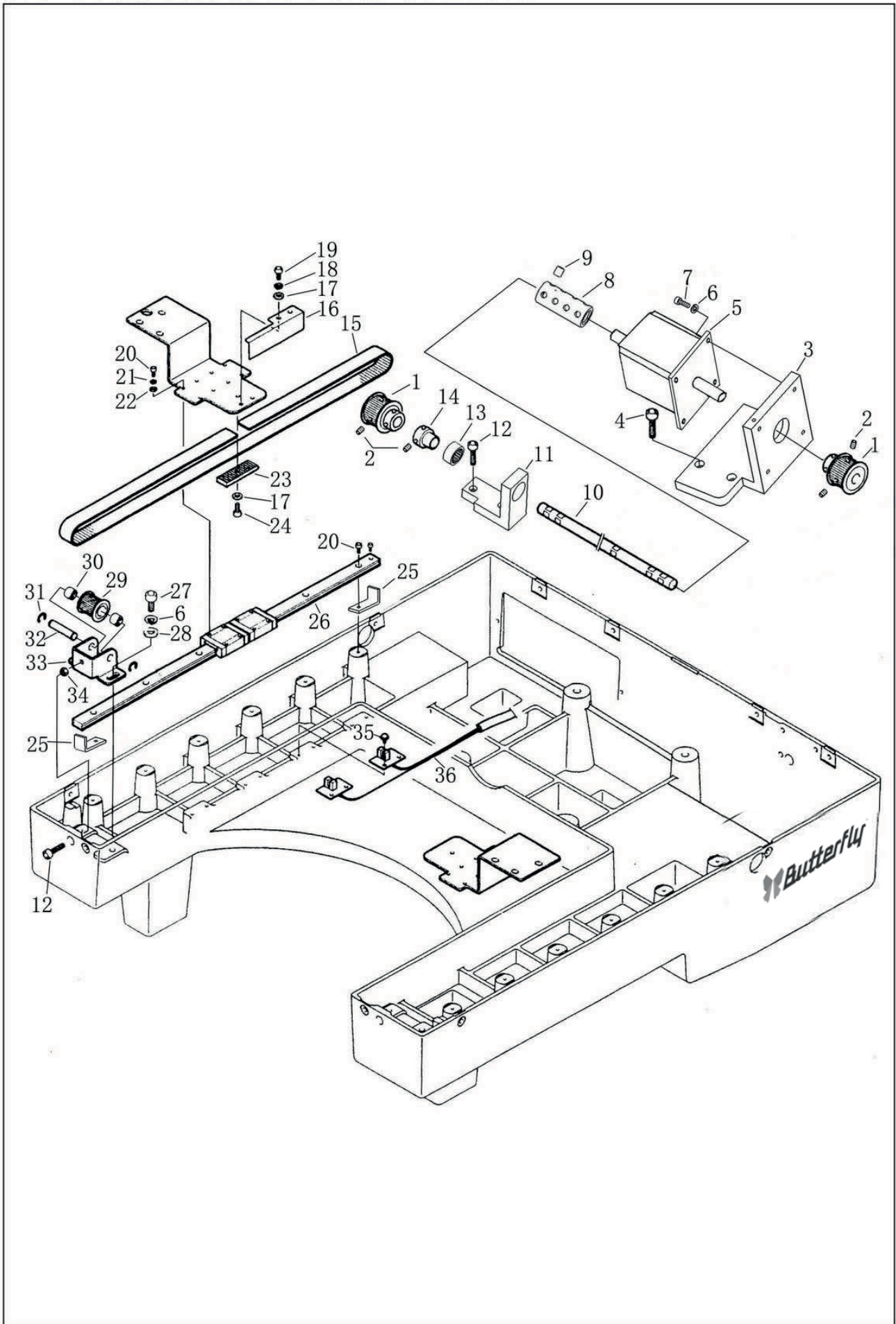
# 9、 NEEDLE BAR BRACKET (2)



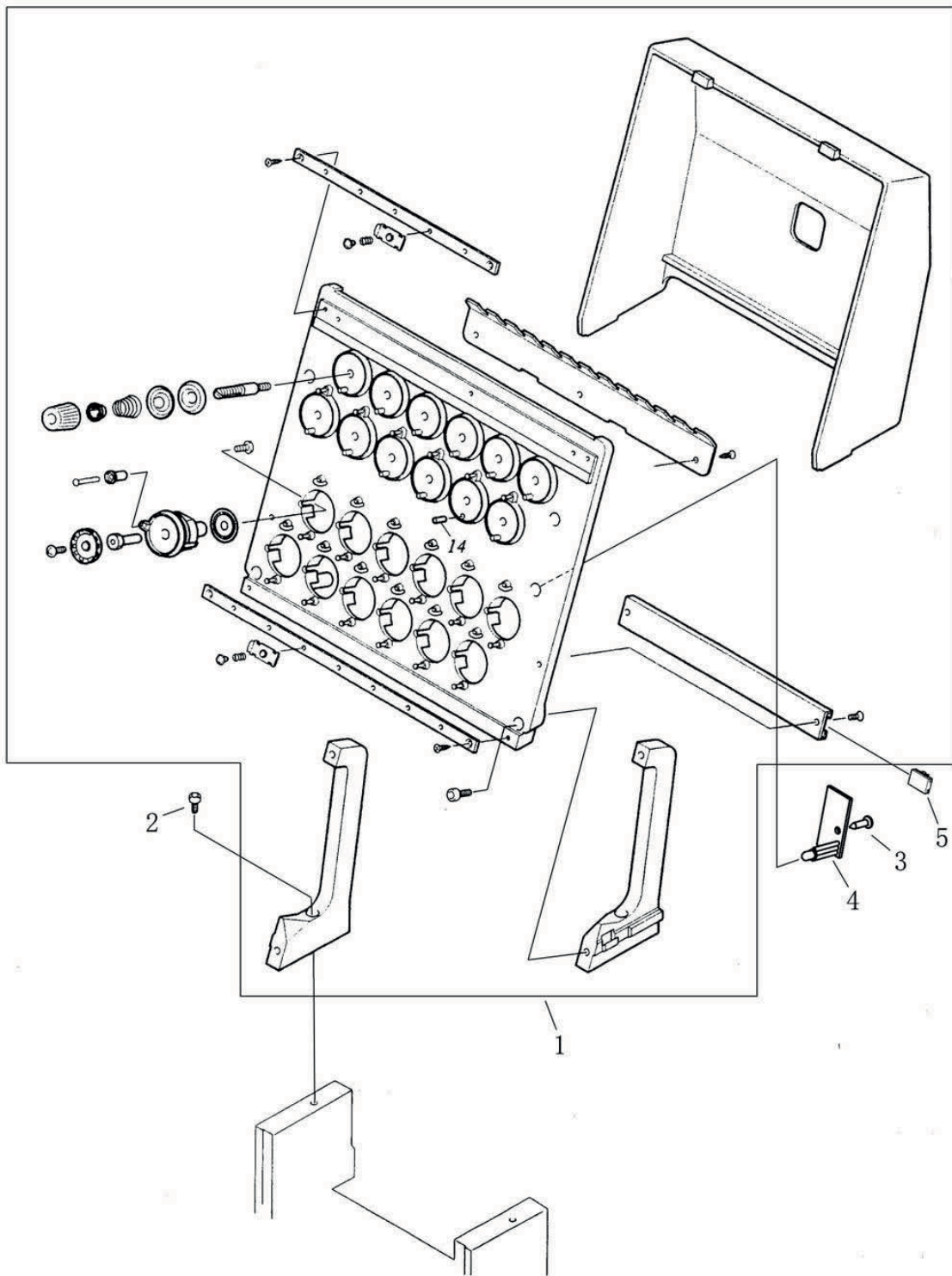
# 10、X-AXIS DRIVE COMPONENTS



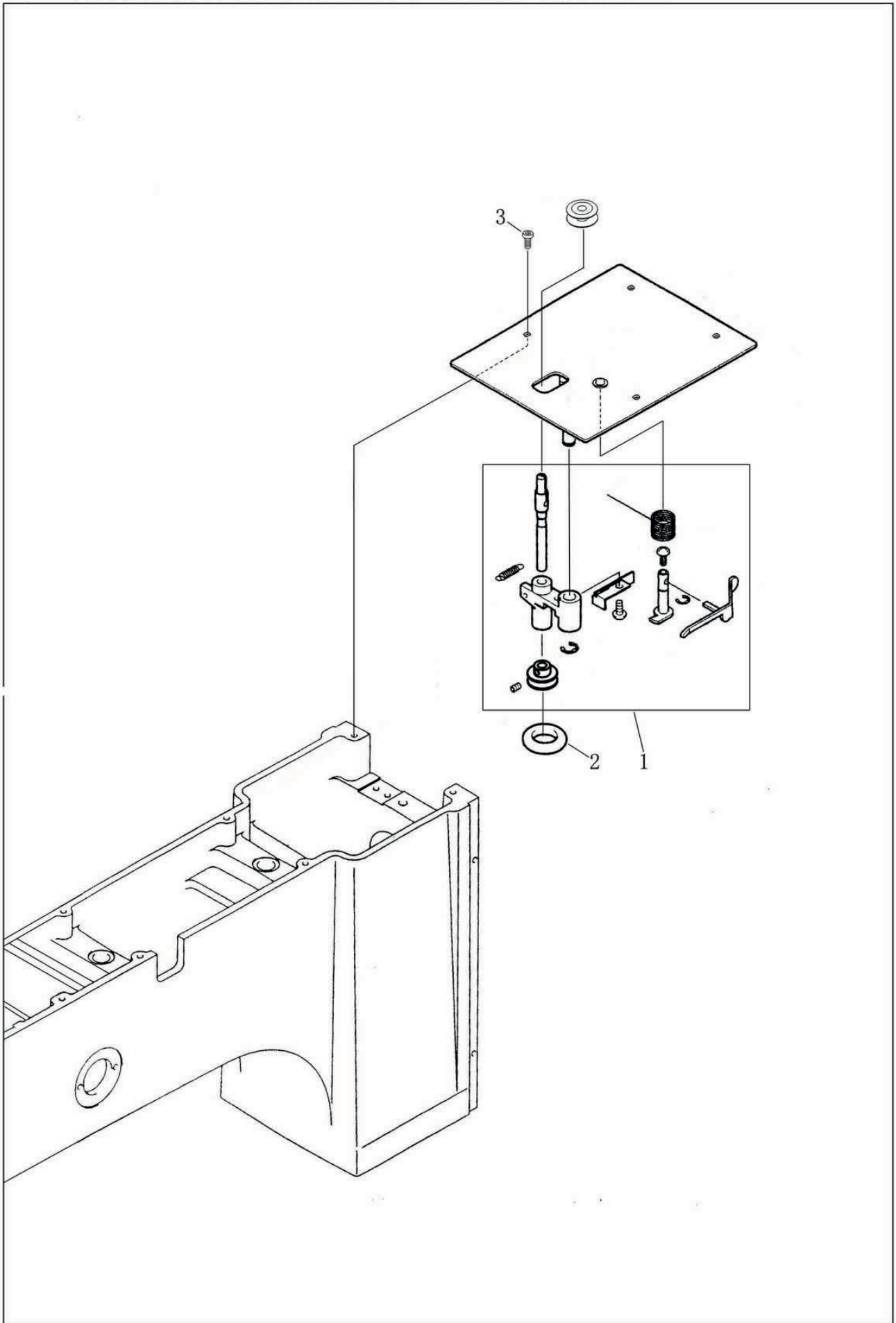
# 11. Y-AXIS DRIVE COMPONENTS



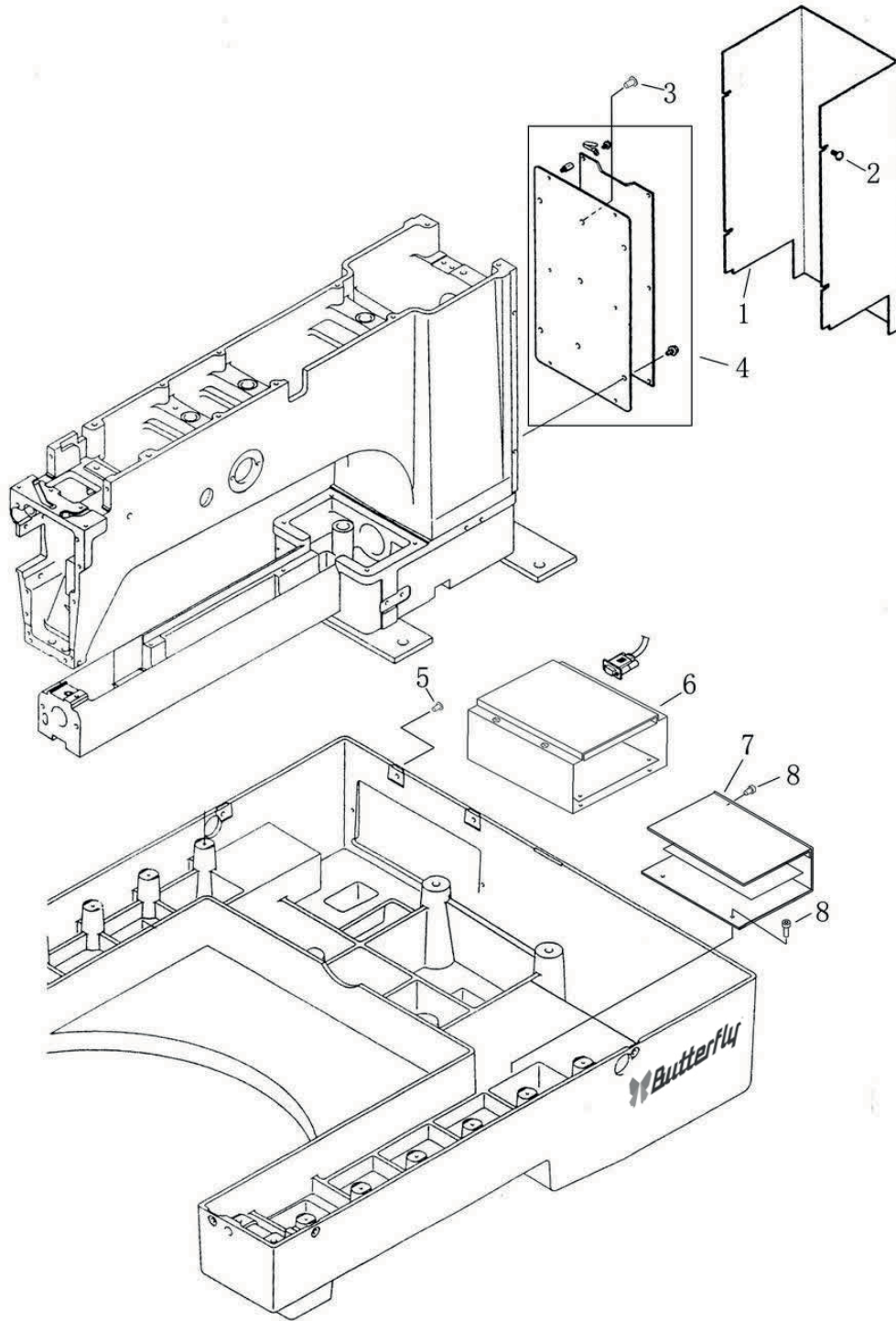
## 12. THREAD TENSION COMPONENTS



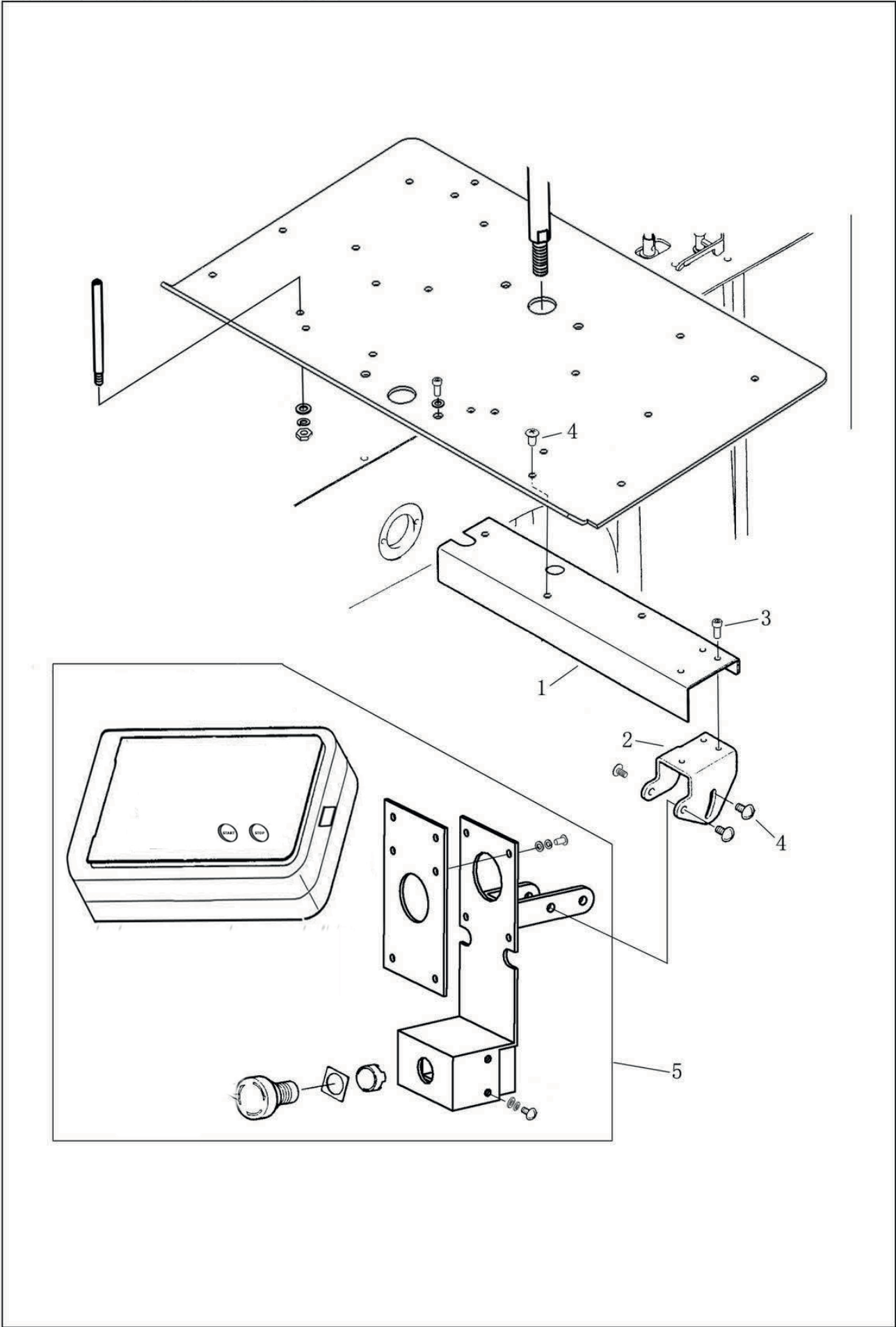
# 13、 AUTOMATIC WINDING COMPONENTS



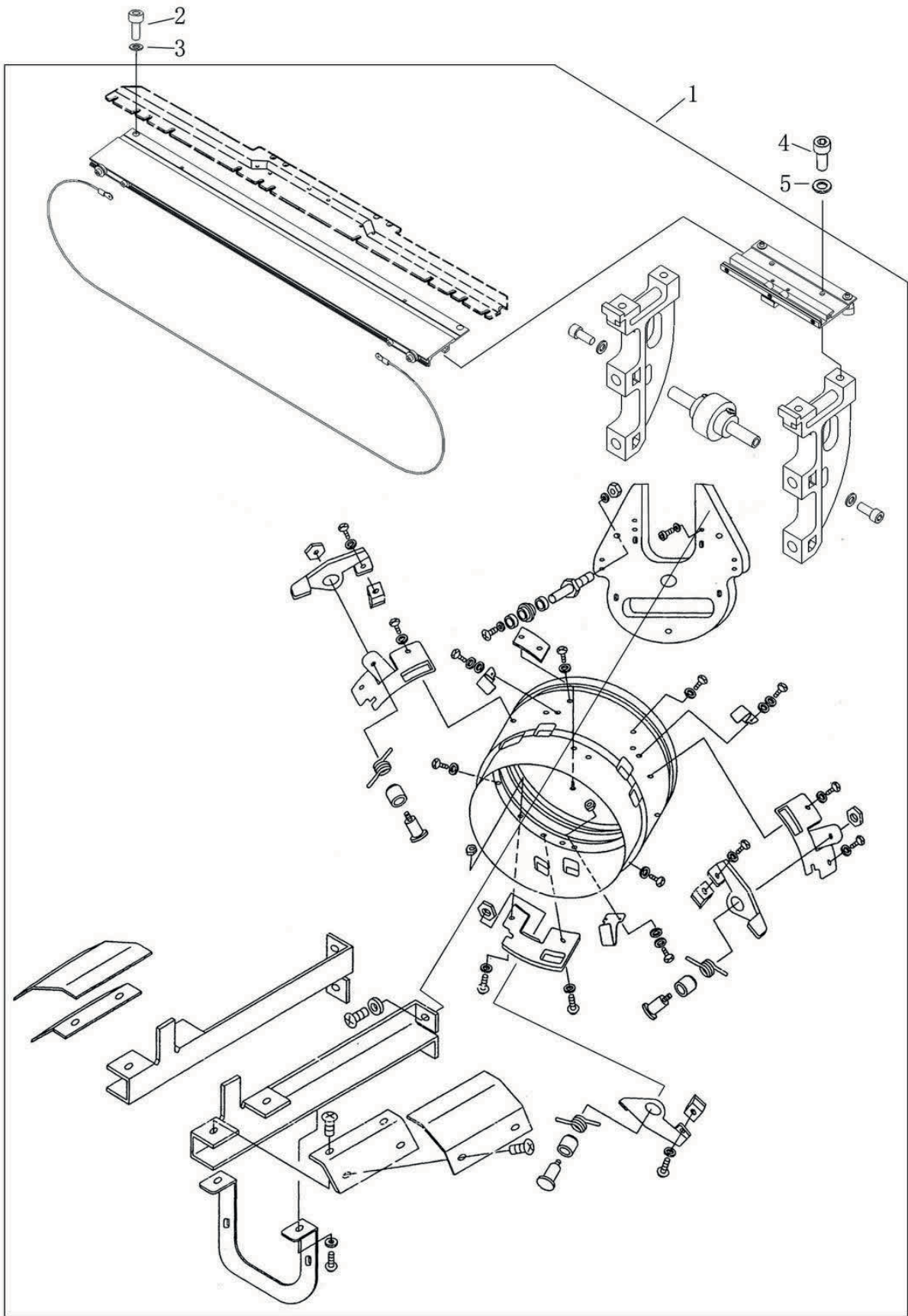
# 14、 ELECTRICAL CONTROL COMPONENTS



# 15、 OPERATE PLATE

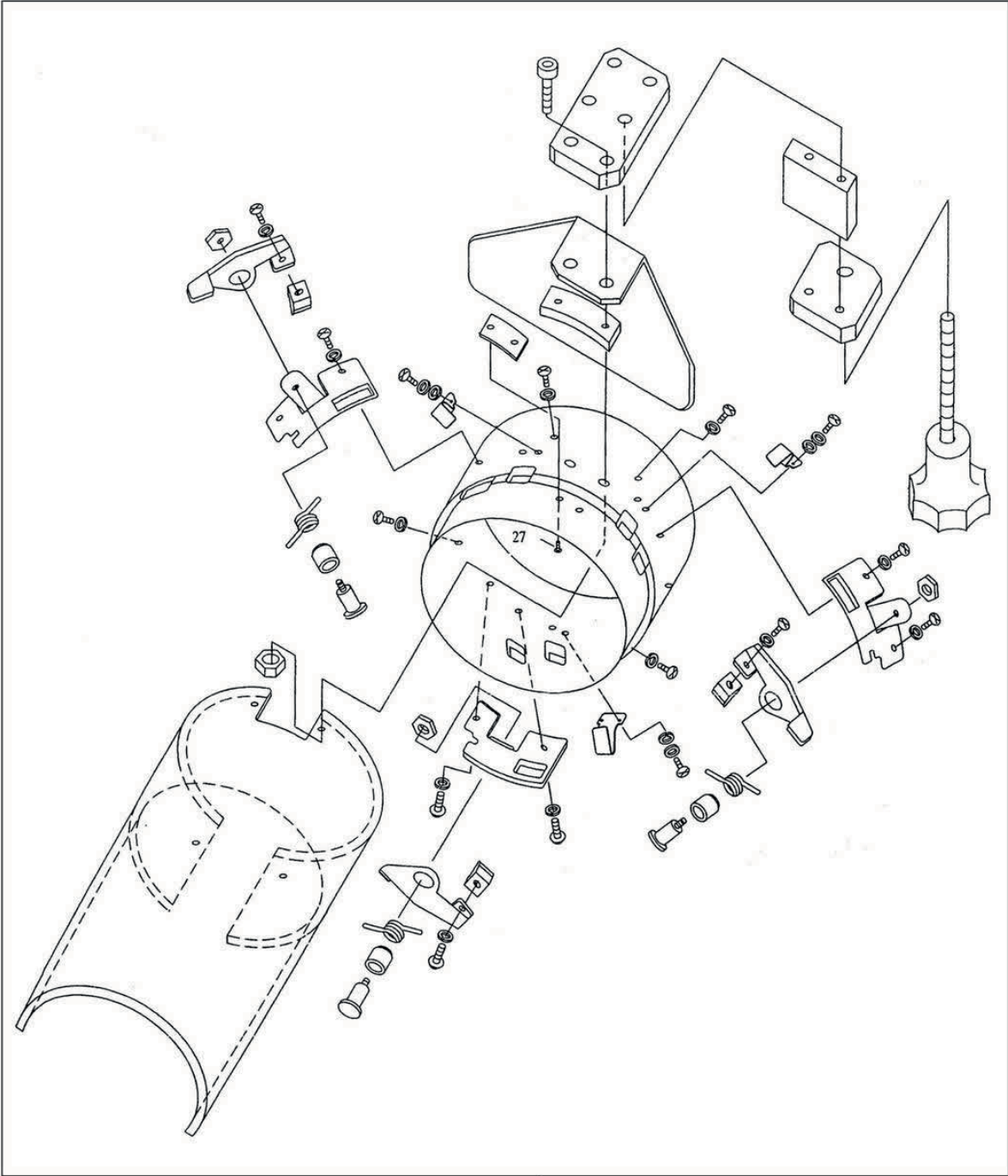


# 16、CAP DRIVE COMPONENTS



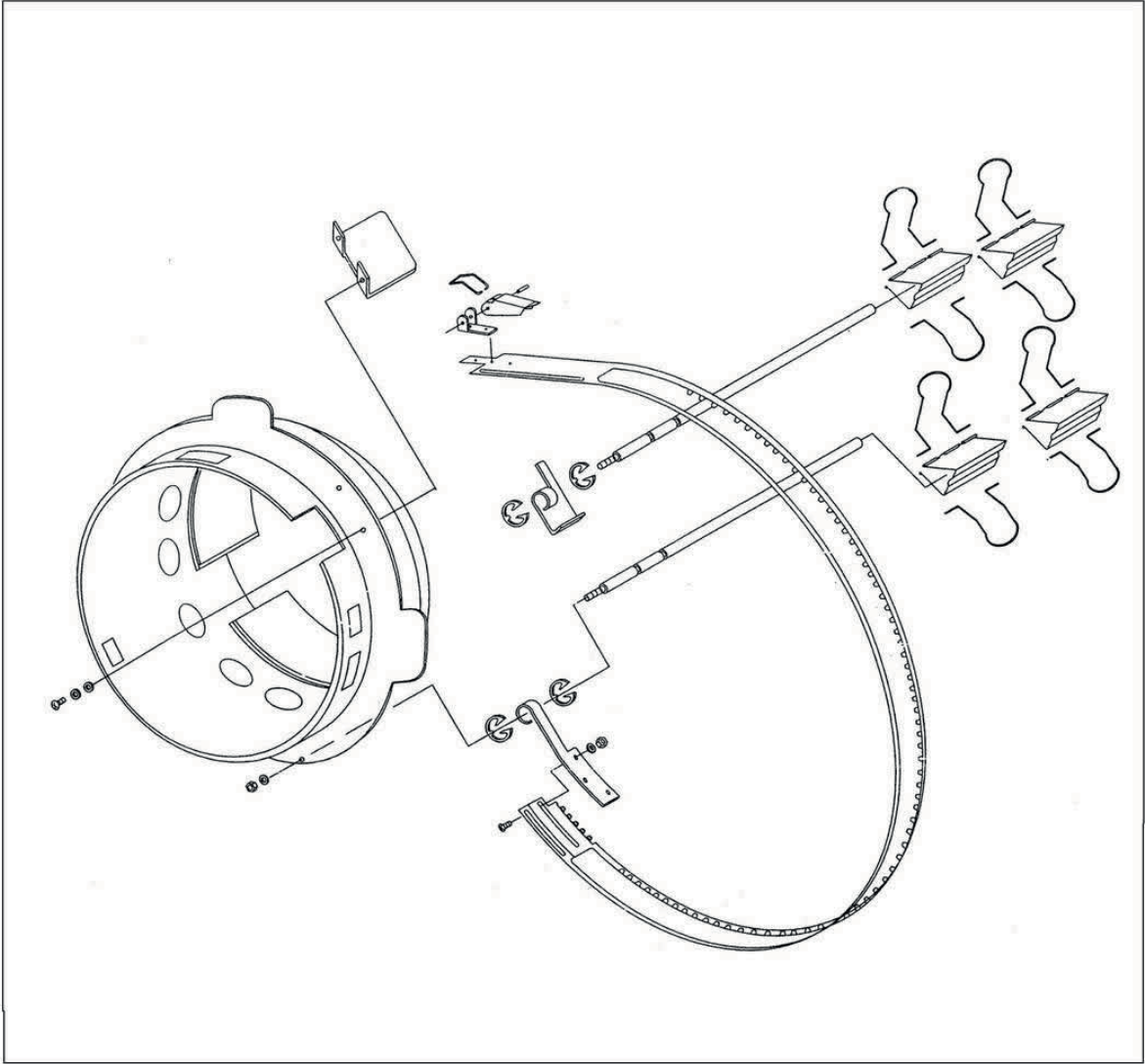


# 17、CAP BASE COMPONENTSS



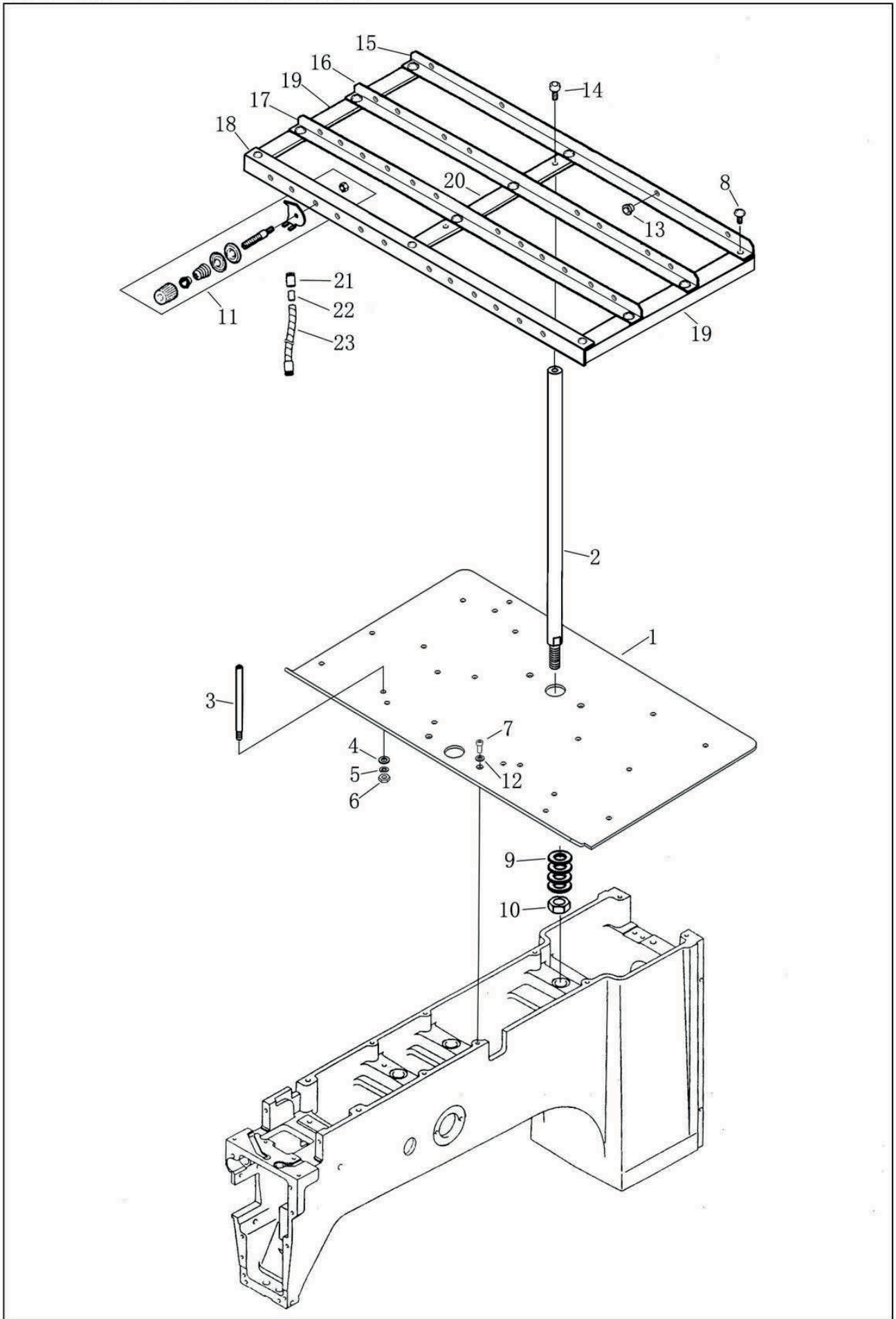
1

# 18、CAP FRAME COMPONENTS

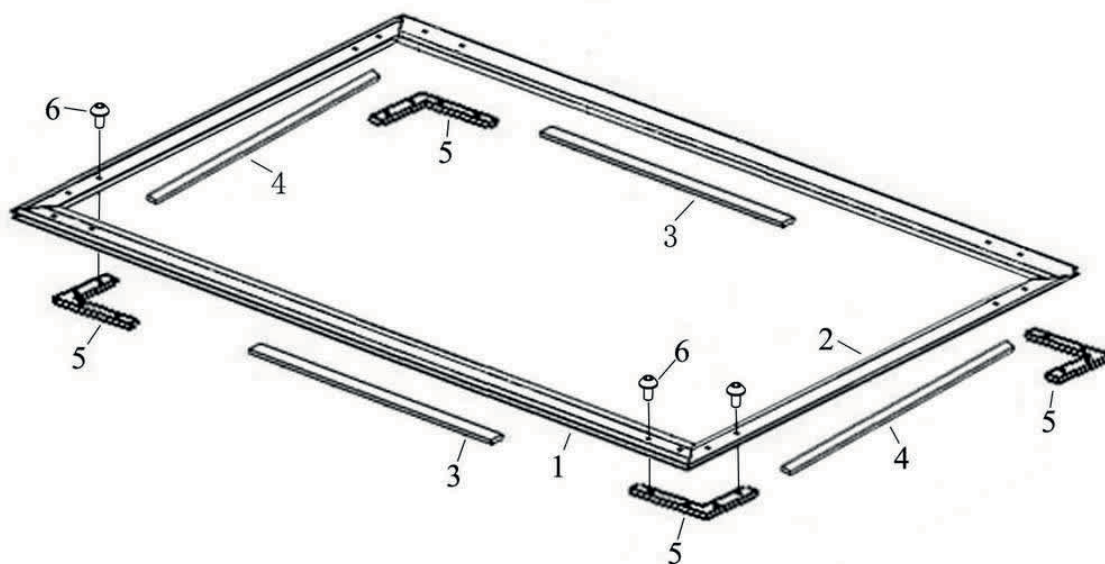


1

# 19、 THREAD SUPPORT



## 20、 EMBROIDERY FRAME



# BUTTERFLY BRAND SINGLE HEAD MACHINE PARTS BOOK

CONTRACT NO:	
APPLICANT:	
APPLICATION DATE:	



DIAGRAM/PART.	QUANTITY	REMARKS

EXTRA INFORMATION (IF YOU HAVE ANY):

